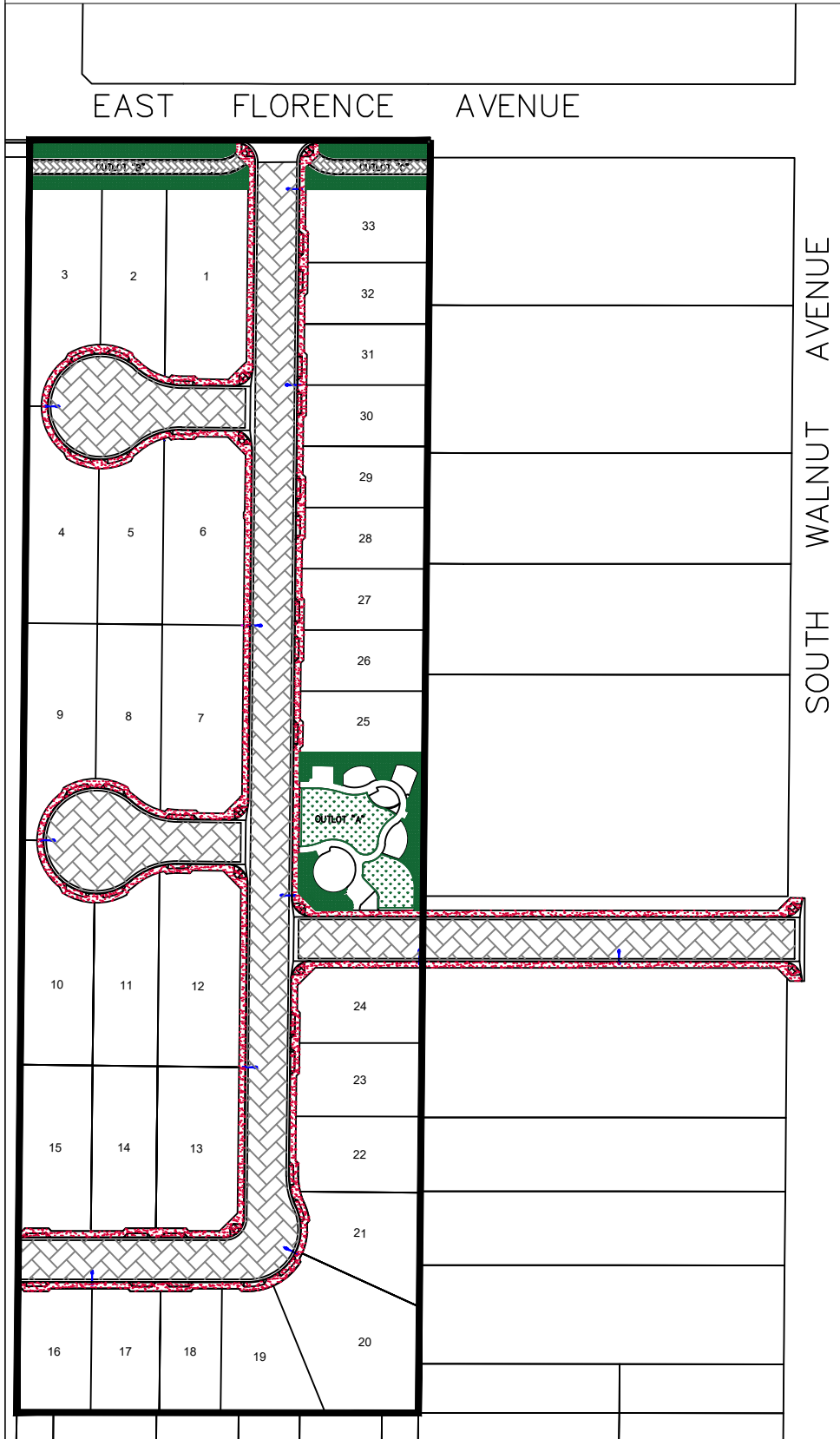



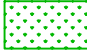


NOT TO SCALE  
April 22, 2024


**PUBLIC WORKS DEPARTMENT**  
LAND PLANNING & SUBDIVISION INSPECTION SECTION  
FEATURES TO BE ADDED BY ANNEXATION NO. 149  
COMMUNITY FACILITIES DISTRICT NO. 11




**LANDSCAPE AND IRRIGATION:**

-  BUFFERS/PARKWAYS/MEDIAN  
TREES & SHRUBS = 9,473 SF
-  TURF & BEDS  
GROUND COVER = 4,221 SF
- SMALL TREES = 15 EACH  
LARGE TREES = 16 EACH

**CONCRETE IMPROVEMENTS:**

-  CURB & GUTTER = 3,839 LF  
VALLEY GUTTER = 2,008 SF  
SIDEWALK & CURB RAMPS = 21,312 SF

**LOCAL STREET PAVEMENT:**

-  INTERIOR RESIDENTIAL = 64,399 SF  
ALLEY/TRAIL = 2,971 SF

**OUTLOT HARDSCAPE AND AMENITIES:**

- \*CONCRETE WALKS & PADS = 7,807 SF
- \*TABLES = 4 EACH
- \*BENCHES = 3 EACH
- \*TRASH RECEPTACLES = 3 EACH
- \*SAFETY SURFACE = 1,458 SF
- \*PLAY STRUCTURE = 1 EACH
- \*SHADE STRUCTURE = 1 SET
- \*EXERCISE EQUIPMENT = 1 SET
- \*BLOCK WALL = 120 LF
- \*DECOMPOSED GRANITE PATHWAYS = 180 CF
- \*PARK LIGHTS = 2 EACH

**STREET LIGHTS:**  
TOTAL = 11 EACH

